

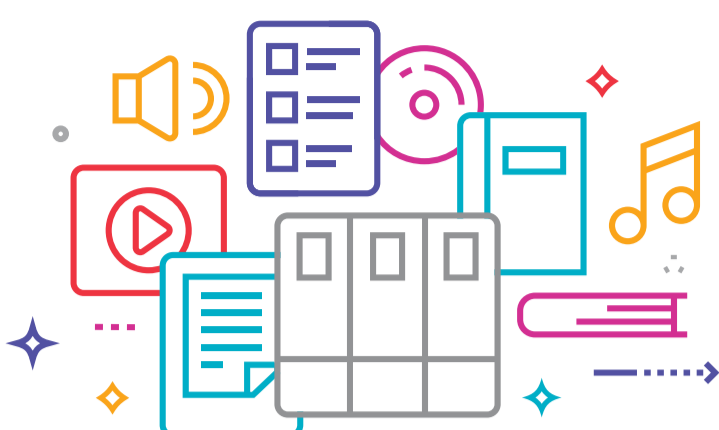
With BiblioCommons Libraries Thrive

Libraries that subscribe to BiblioCommons services see higher library usage

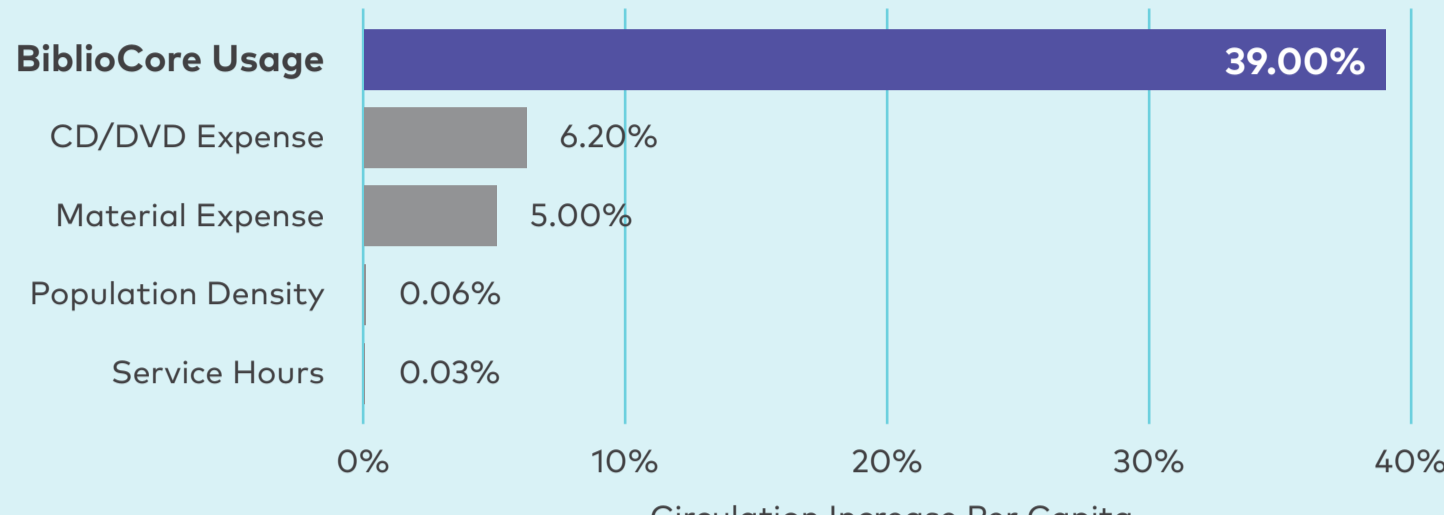
Even after adjusting for population size, funding per capita, collection size, collection budget, hours, and staff, libraries that subscribe to BiblioCommons services see higher library usage than public libraries who don't use BiblioCommons*.

39%↑

greater circulation per capita with the BiblioCore catalog



Variables that Positively Correlate with Circulation



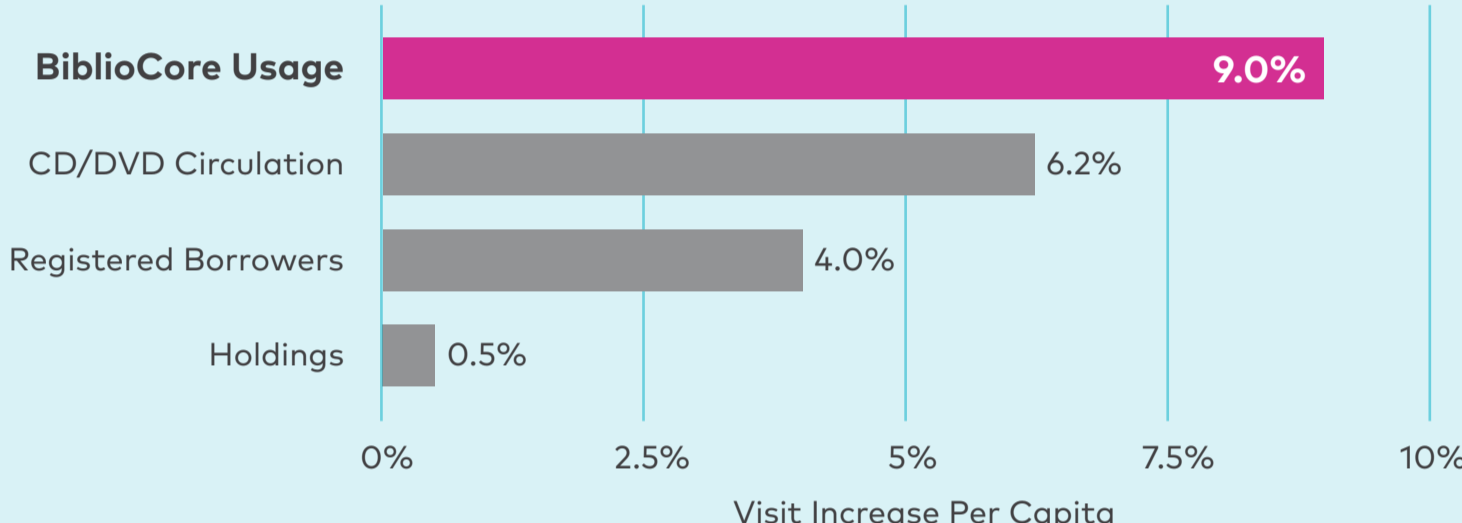
This graph illustrates how the variables of service hours, population density, material expense, CD/DVD expense and BiblioCore usage are all positively correlated with circulation. Of all the variables that positively correlated with circulation, BiblioCore Usage had the strongest correlation by far.



9%↑

more visits per capita with BiblioCore

Variables that Positively Correlate with Library Visits



This graph illustrates how the variables of holdings, registered borrowers, CD/DVD circulation and BiblioCore usage are all positively correlated with visits, both in person and virtual library visits. Of all the variables that positively correlated with visits, BiblioCore Usage had the strongest correlation.

Happy, Engaged Patrons Keep Coming Back for More

"CPL has one of the most user-friendly on-line services I've ever seen. Thank you so very much for making using our beautiful library a hassle-free, no-nonsense, efficient and effective amenity. Keep up the good work. Wish some others were like you!"

— Chicago Public Library Patron

"I love the new system! The ability to share ratings and comments on items is making using the library fun again."

— Multnomah County Library Patron

"I find myself spending time on my library account almost every day, so I must be digging the new features. It's great being able to keep track of what I've borrowed, follow up with the writers I like and discover new loot with good ratings. Now I have months of reading planned in advance!"

— Austin Public Library Patron

"Great design. Great website. I've fallen in love with the library all over again."

— San Diego Public Library Patron

"I LOVE you!! You make it so easy to use the library."

— Boston Public Library Patron

"Easy to use, easy to understand, intuitive, and very advanced... I give the online experience an 11 outta 10!"

— King County Library System Patron

The BiblioCommons Community of Libraries

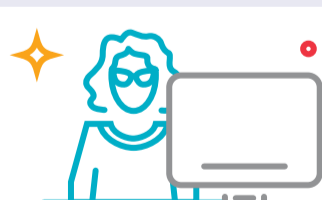


284

Public Libraries in the U.S. and Canada

12,153,147

Registered BiblioCommons users

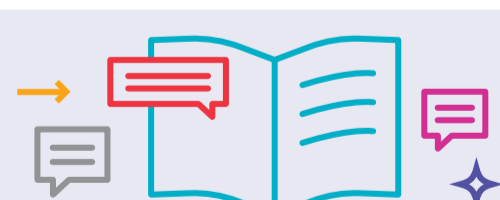


178,696

Staff Lists created

900,134

Tags added

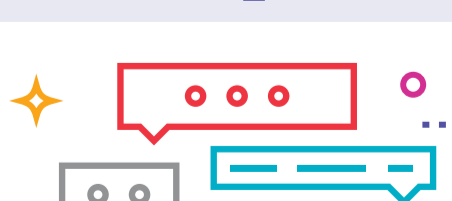


21,675,551

Items on Shelves in 2019

70,767,544

Holdings placed in 2019



500,000+

Suggestions and compliments submitted by library patrons via our online feedback box — feedback that drives continuous innovation.

Love your online library, with BiblioCommons.

www.bibliocommons.com

Website | Discovery Layer | Events | Mobile Apps | Email Marketing | & More

*We retained a third-party consultant to conduct a statistical analysis of all PLDS data from the last 10 years to assess the impact of subscribing to BiblioCommons services, and specifically BiblioCore, our catalog, on a library's key performance indicators. This data is available as of June 2020. These numbers are always changing. We're happy to share more information about the methodology behind this study. Email us at info@bibliocommons.com

